

ALSTOM

FREQUENTIS



funkwerk
traffic & control communication

kapsch >>>

nsn

Selex ES
A Finmeccanica Company

SIEMENS

SIERRA
WIRELESS™

WENZEL
ELECTRONIC SYSTEMS

GSM-R Interoperability - Technical Perspective

Ecaterina Ganga

UIC Conference, Paris
10-11 September 2013



ERIG 10-11 Sept 2013
Paris UIC HQ

www.gsm-rail.com

Agenda



1. GSM-R Interoperability and benefits for the Railways
2. The GSM-R multivendor InterOperability Testing (IOT)
3. Current GSM-R IOT projects co-financed by the European Commission



10-11 Sept 2013
Paris UIC HQ

Agenda



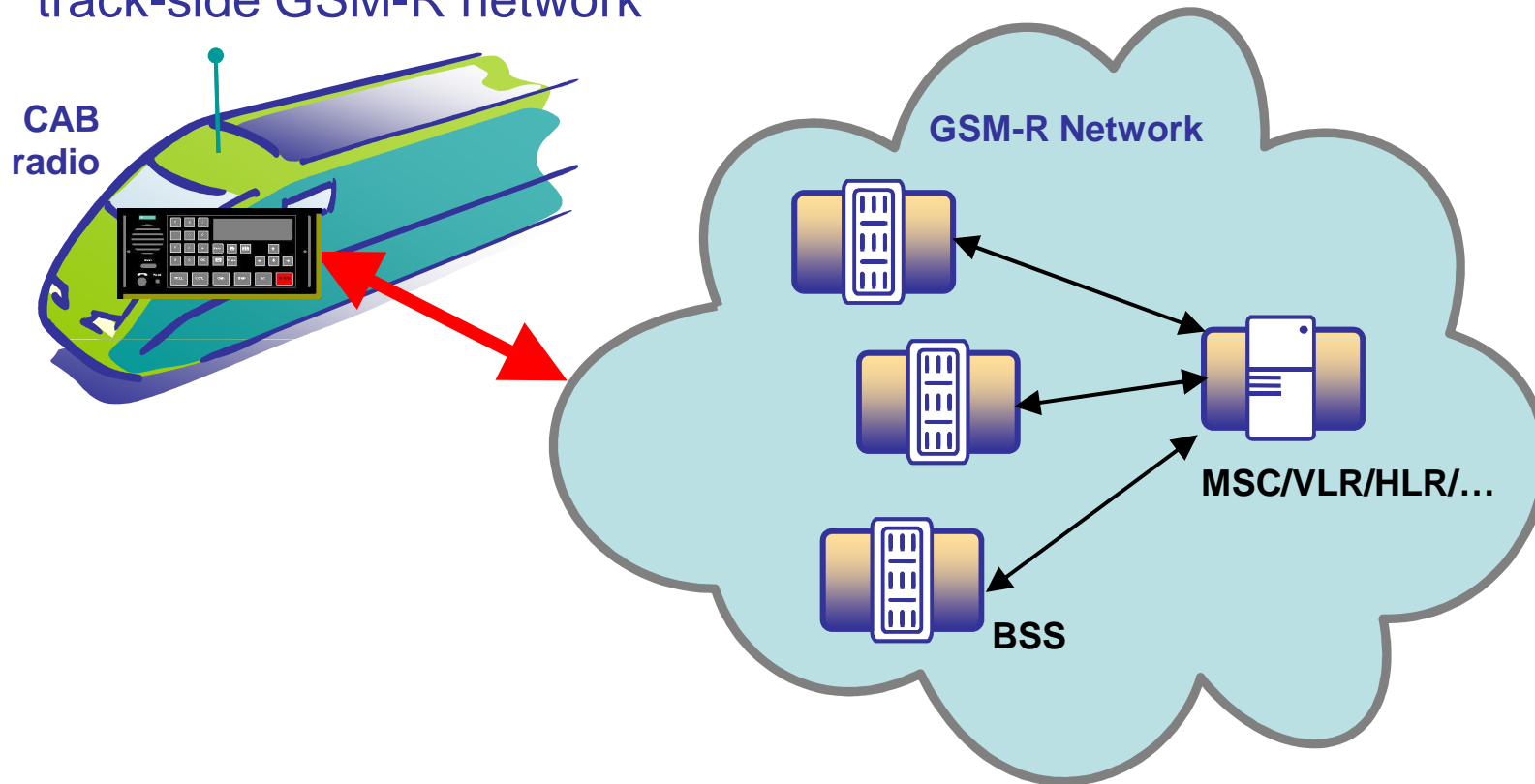
1. GSM-R Interoperability and benefits for the Railways
2. The GSM-R multivendor InterOperability Testing (IOT)
3. Current GSM-R IOT projects co-financed by the European Commission



GSM-R Interoperability



Interoperability of on-board GSM-R Cab radio with track-side GSM-R network

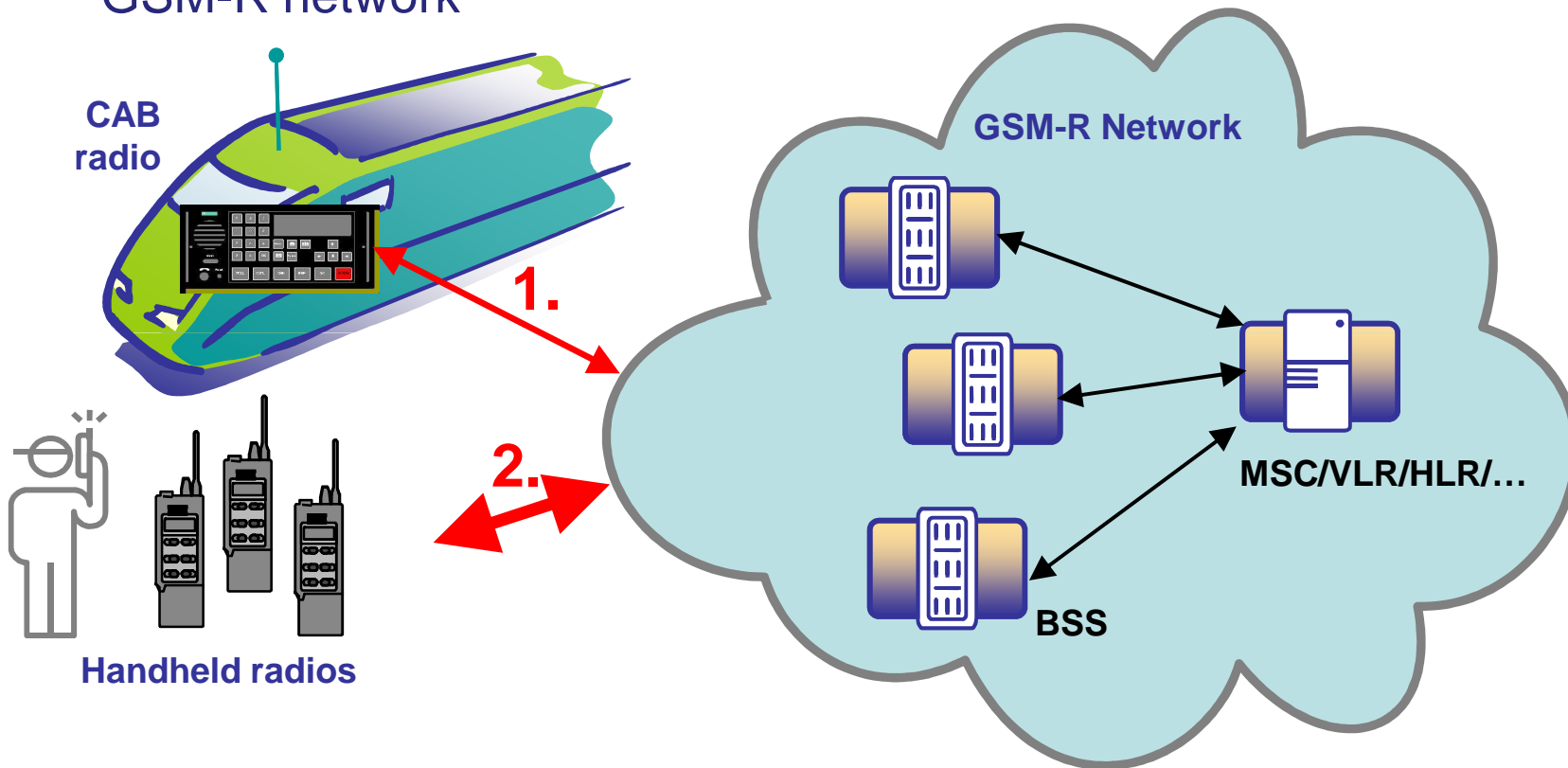


UIC
GSM-R
ASSET
& EVOLUTION
MANAGEMENT

ERIG
10-11 Sept 2013
Paris UIC HQ

GSM-R Interoperability

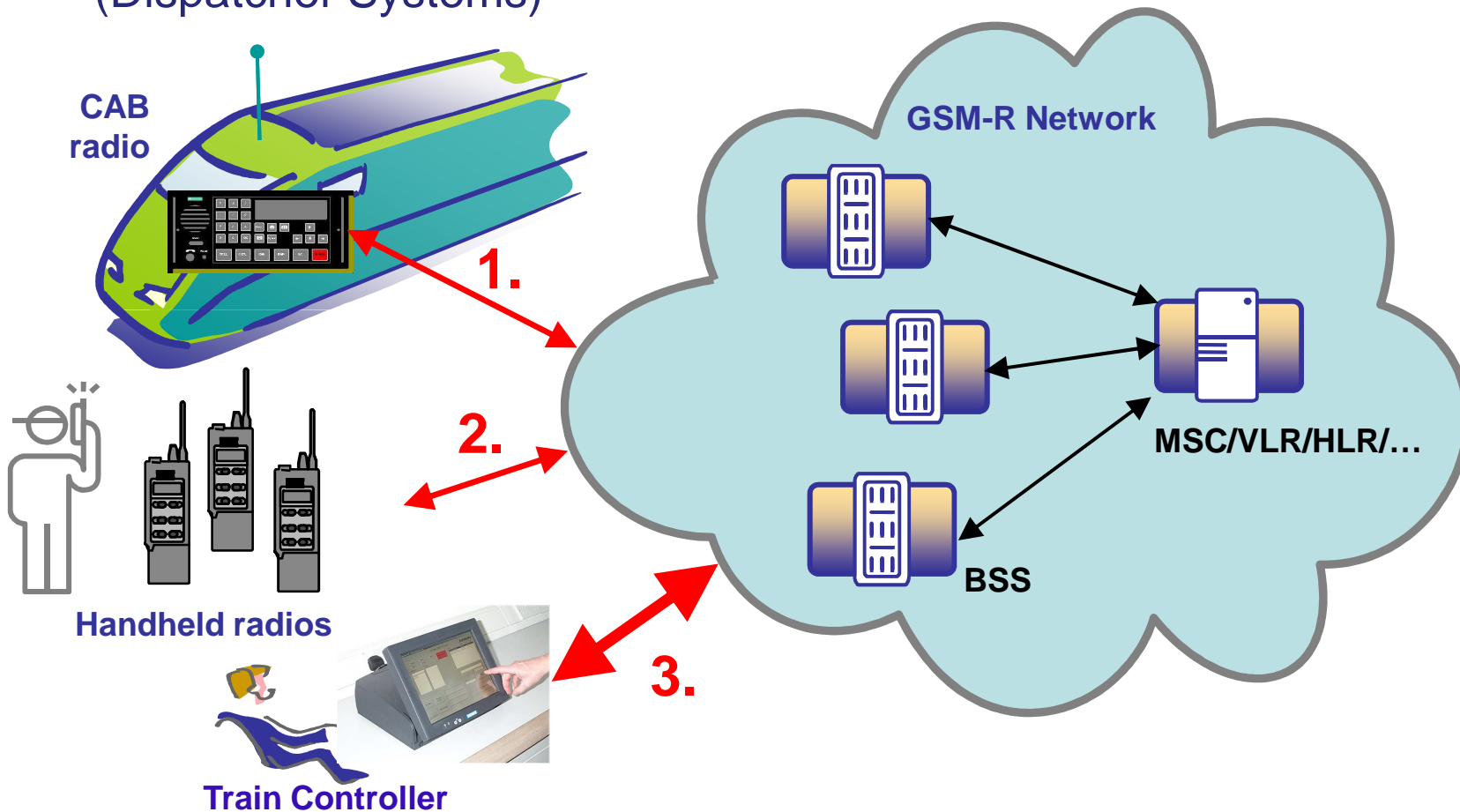
Interoperability of Operational & Shunting Handhelds with GSM-R network



ERIG 10-11 Sept 2013 Paris UIC HQ

GSM-R Interoperability

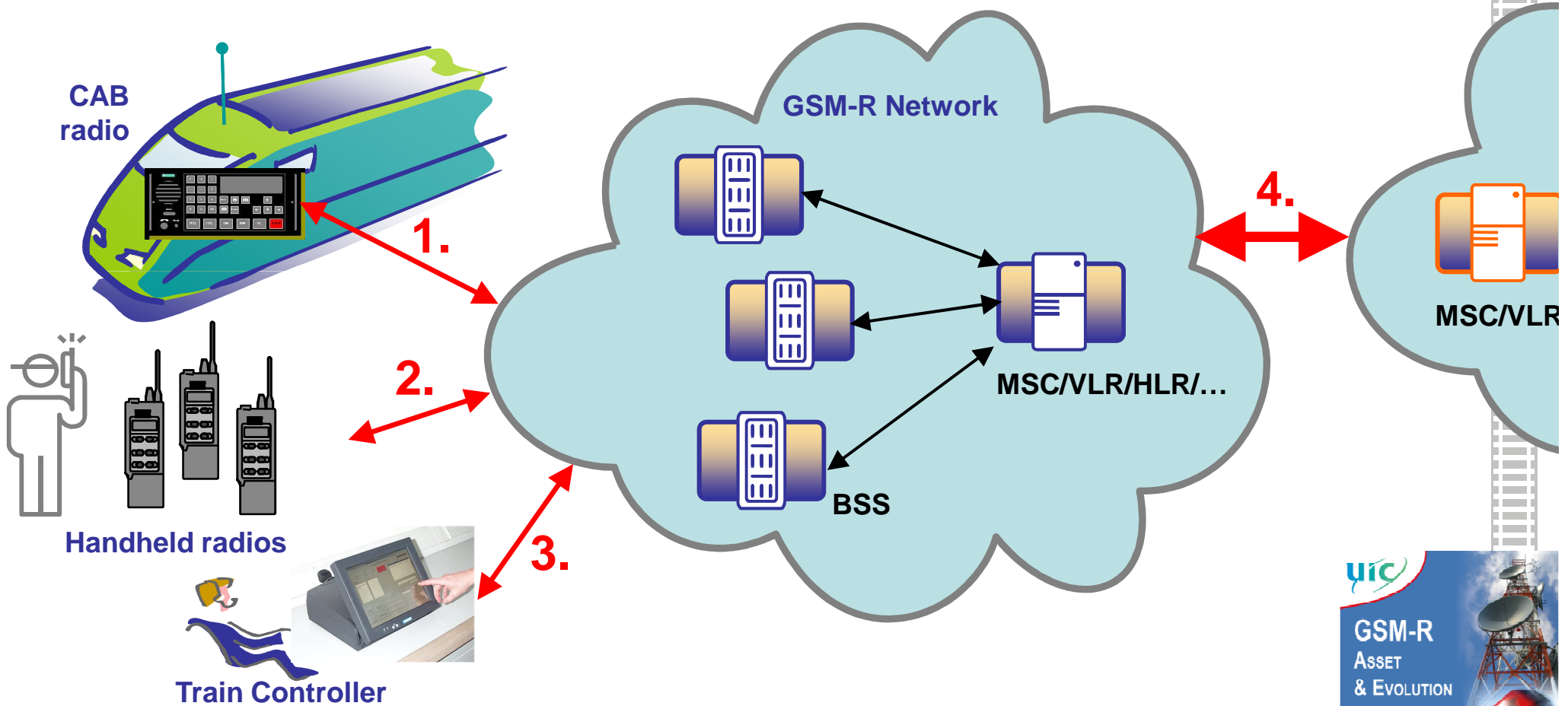
Integration of different Train Controller Systems
(Dispatcher Systems)



ERIG 10-11 Sept 2013
Paris UIC HQ

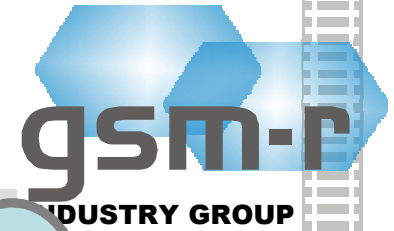
GSM-R Interoperability

Interoperability of interconnected GSM-R networks

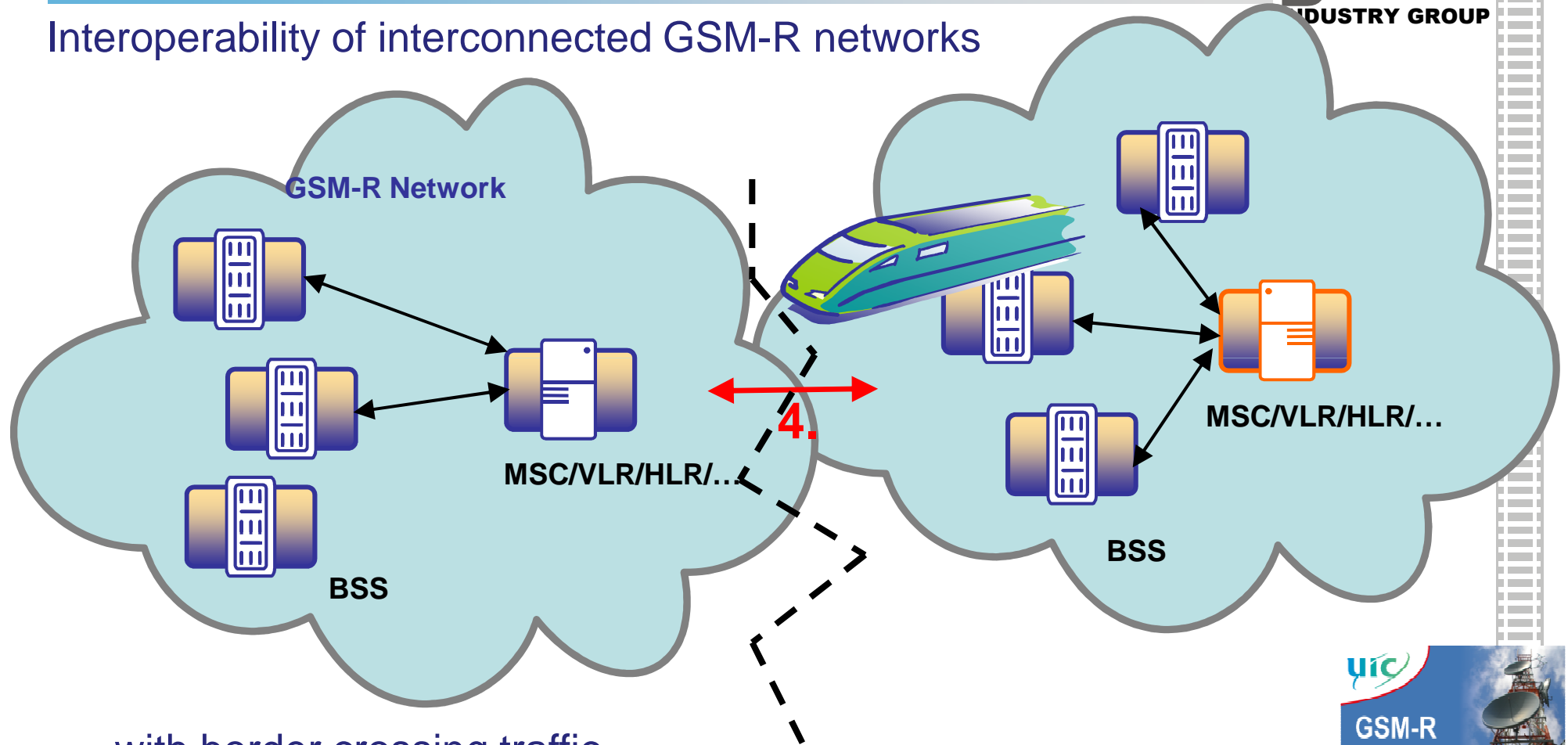


ERIG 10-11 Sept 2013 Paris UIC HQ

GSM-R Interoperability



Interoperability of interconnected GSM-R networks



... with border crossing traffic

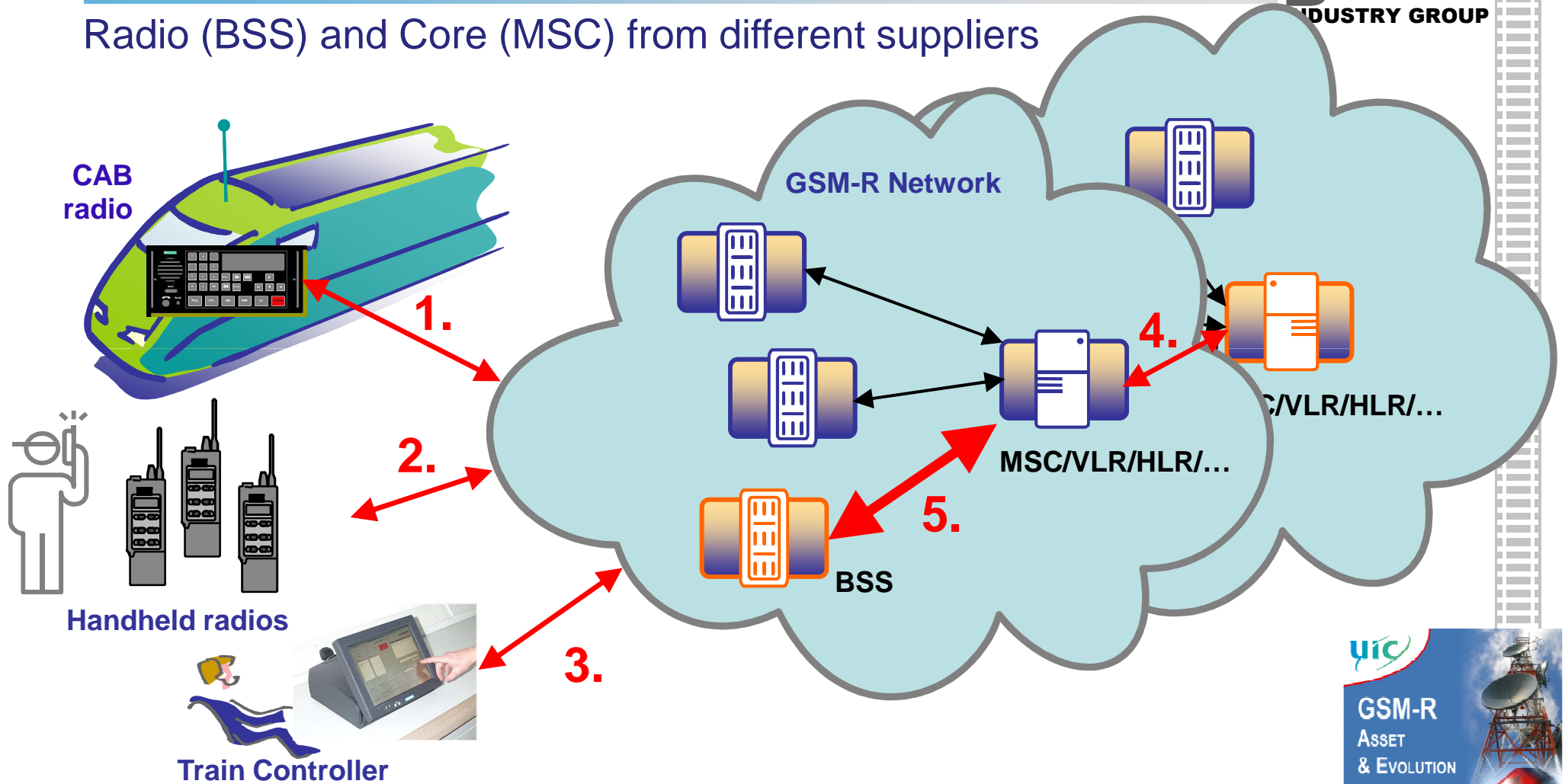


ERIG 10-11 Sept 2013 Paris UIC HQ

GSM-R Interoperability



Radio (BSS) and Core (MSC) from different suppliers



UIC
GSM-R
ASSET
& EVOLUTION
MANAGEMENT
10-11 Sept 2013
Paris UIC HQ

ERTMS Memorandum of Understanding



Interoperability testing and Certification

- Initiative by the European Commission
- Signed in Copenhagen on 16 April 2012 by
 - the Commission, CER, EIM, ERFA, UIC, UNIFE (UNISIG) and
 - GSM-R Industry Group
- in 75 paragraphs jointly declare how to move GSM-R and ETCS into a continued, successful future
- Includes **Process Improvements** regarding **Interoperability Testing and Certification** of GSM-R subsystem

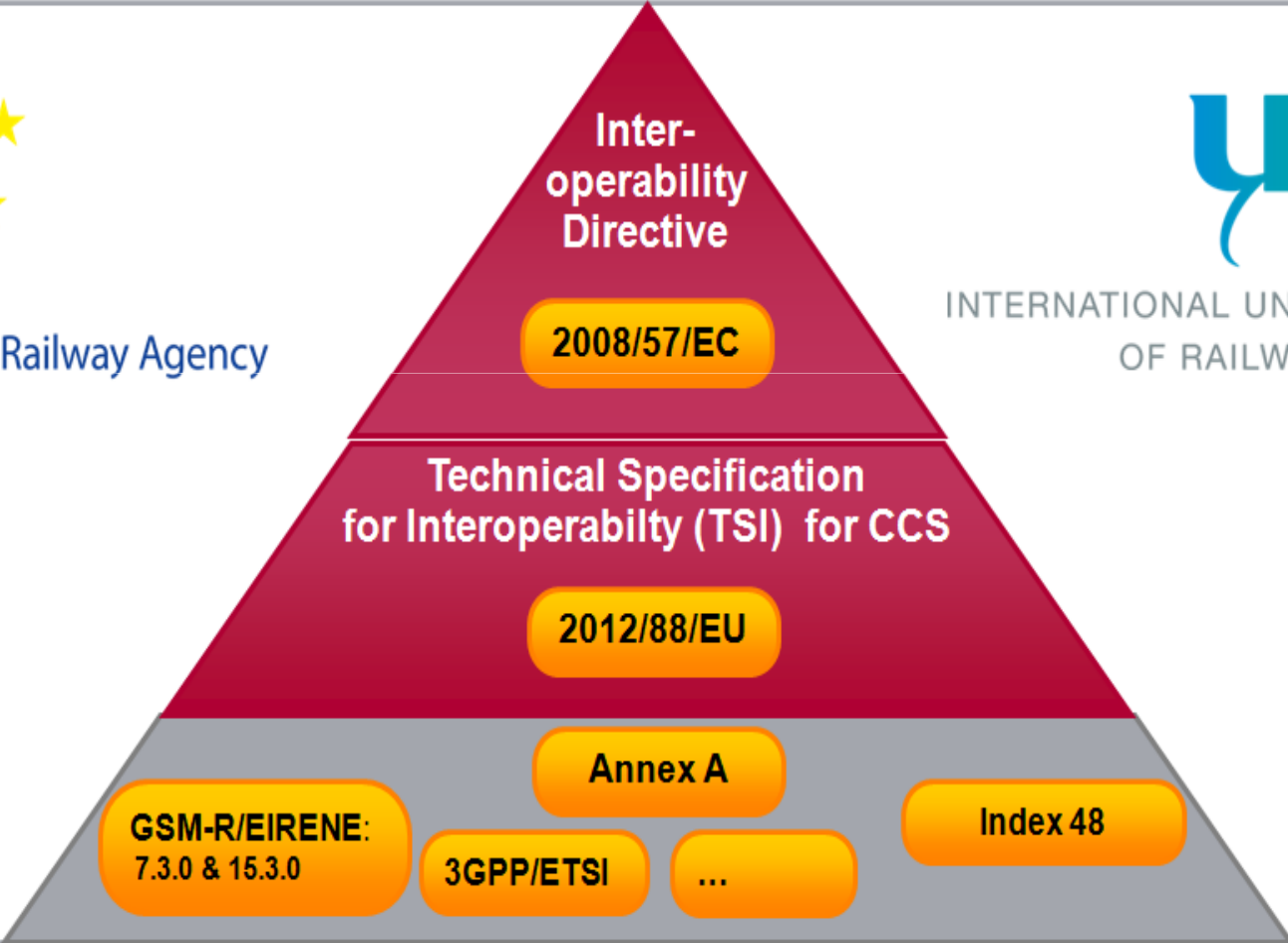


GSM-R Specification

Interoperability requirements



INTERNATIONAL UNION
OF RAILWAYS



10-11 Sept 2013
Paris UIC HQ

GSM-R Interoperability testing



Benefits for Railway Operators

- Certification of functionality according to technical specifications
 - ...keeping the pace with the technology advances and specifications upgrades
 - ...therefore **guaranteed interoperability**, higher quality and reliability
- Cost efficiency for the Railway operators
 - ...as interoperability tests are already performed at a global level
- Industry competition
 - ...as interoperability tests are performed in multi-vendor configurations



ERIG 10-11 Sept 2013
Paris UIC HQ

Agenda



1. GSM-R Interoperability and benefits for the Railways
2. The GSM-R multivendor InterOperability Testing (IOT)
3. Current GSM-R IOT projects co-financed by the European Commission



EIRENE Interconnected GSM-R networks

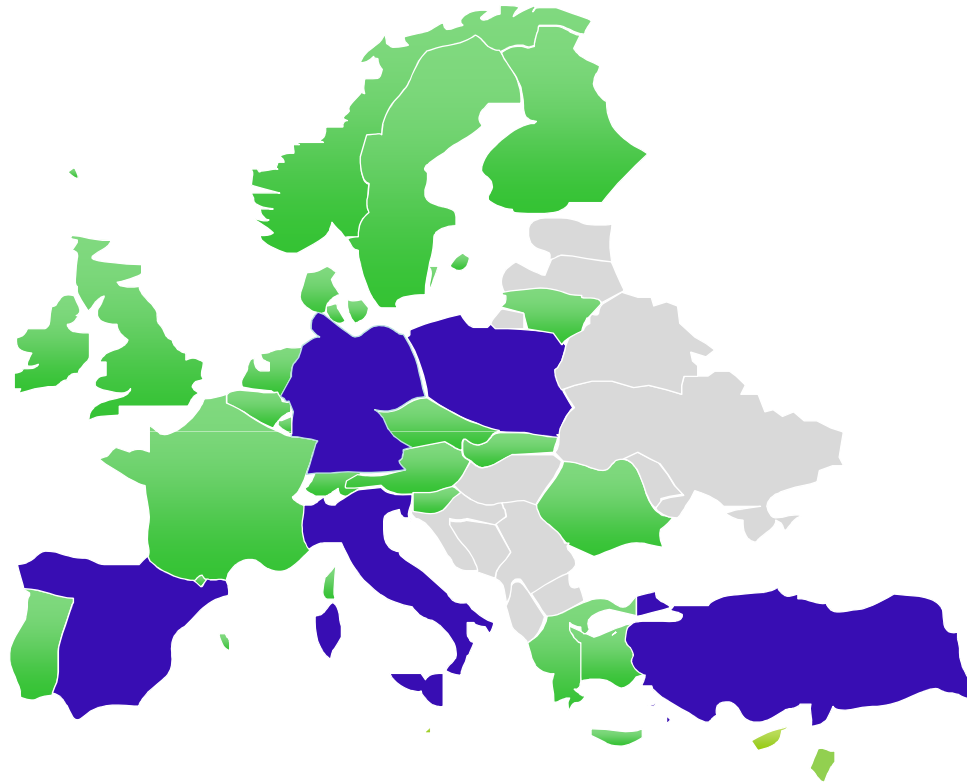


 GSM-R Networks



10-11 Sept 2013
Paris UIC HQ

EIRENE multi-vendor (KCC-NSN) interconnected GSM-R networks



 GSM-R Networks

 Multi-vendor (NSN-KCC) GSM-R networks



 ERIG
10-11 Sept 2013
Paris UIC HQ

GSM-R multi-vendor InterOperability Testing



Performed regularly by NSN and KCC

- GSM-R InterOperability Testing performed regularly by manufacturers since 2002
- All essential interfaces tested: MSC to MSC and MSC to BSS
- Financing : 50% suppliers and 50% EU



GSM-R Interoperability Testing between NSN and KCC

(supported and co-funded by EU)

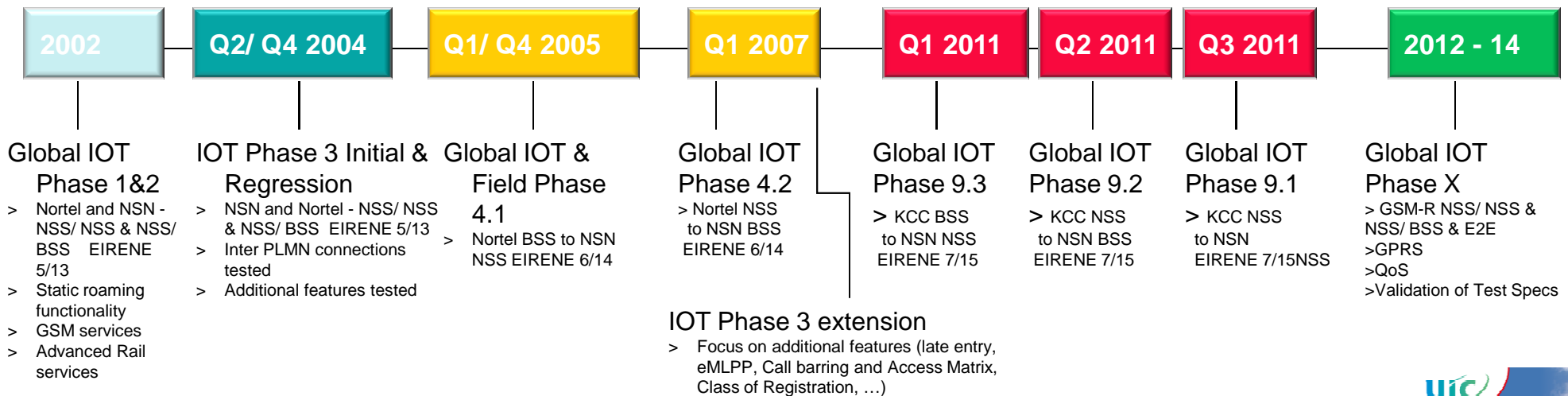


EIRENE
5/13
Issued
2000

EIRENE
6/14
Issued
2003

EIRENE
7/15
Issued
2006

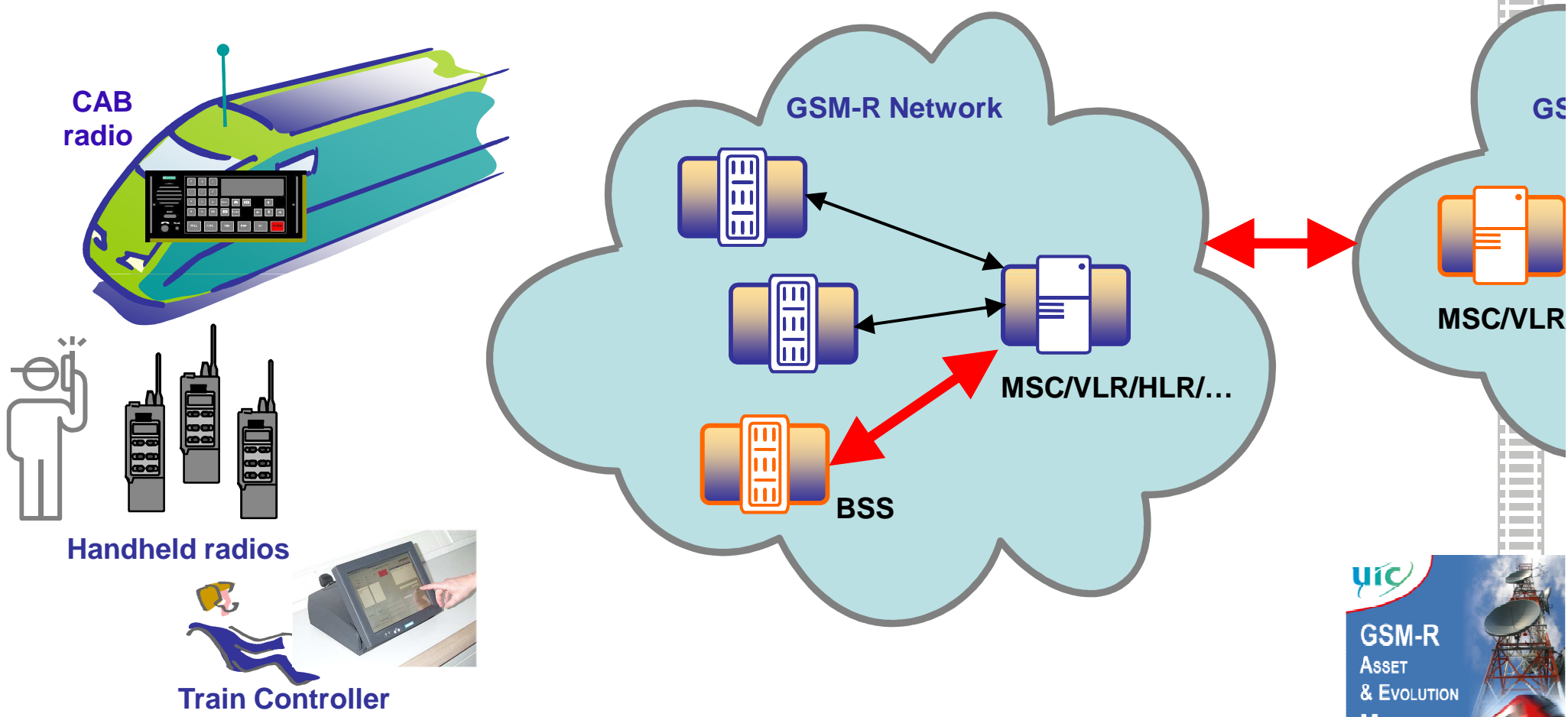
EIRENE
7.3.0/15.3.0
7.4.0/15.4.0



ERIG 10-11 Sept 2013 Paris UIC HQ

Radio (BSS) and Core (MSC) from two different suppliers: KCC and NSN

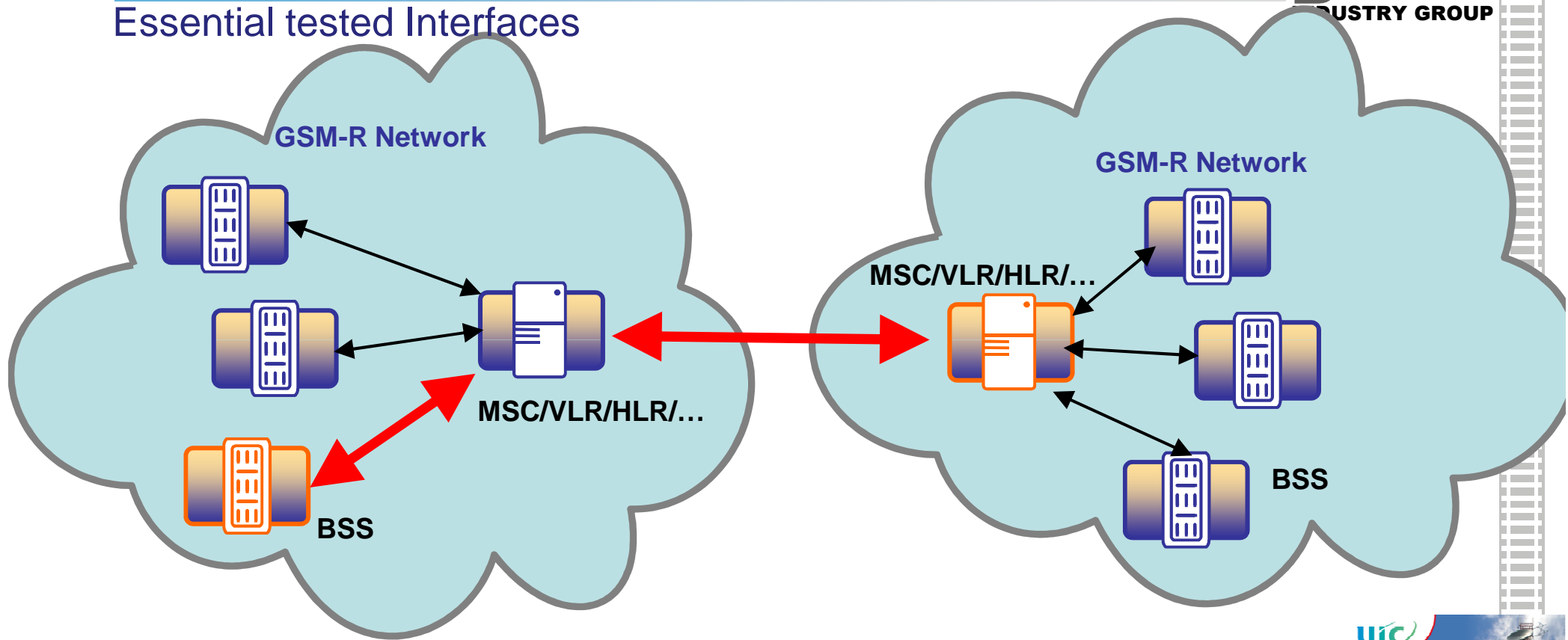
Essential tested Interfaces



10-11 Sept 2013
Paris UIC HQ

Radio (BSS) and Core (MSC) from two different suppliers: KCC and NSN

Essential tested Interfaces



Agenda



1. GSM-R Interoperability and benefits for the Railways
2. The GSM-R multivendor InterOperability Testing (IOT)
3. Current GSM-R IOT projects co-financed by the European Commission



Latest completed EU funding program



TEN MAP 1st Call until end 2011

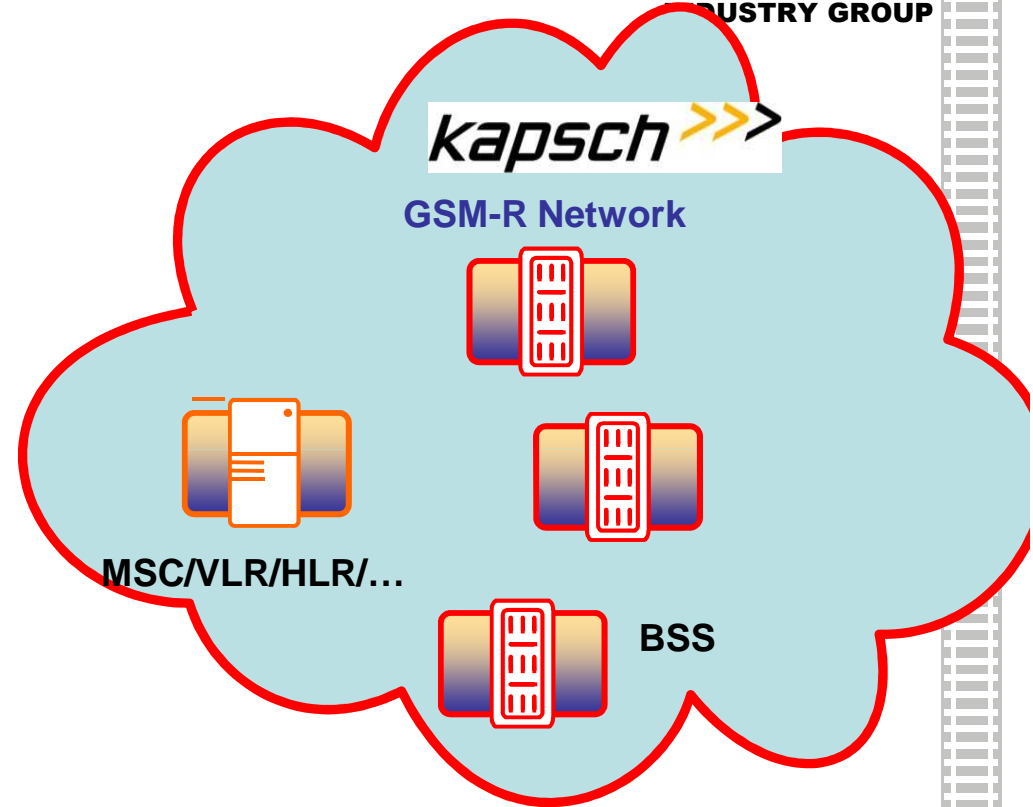
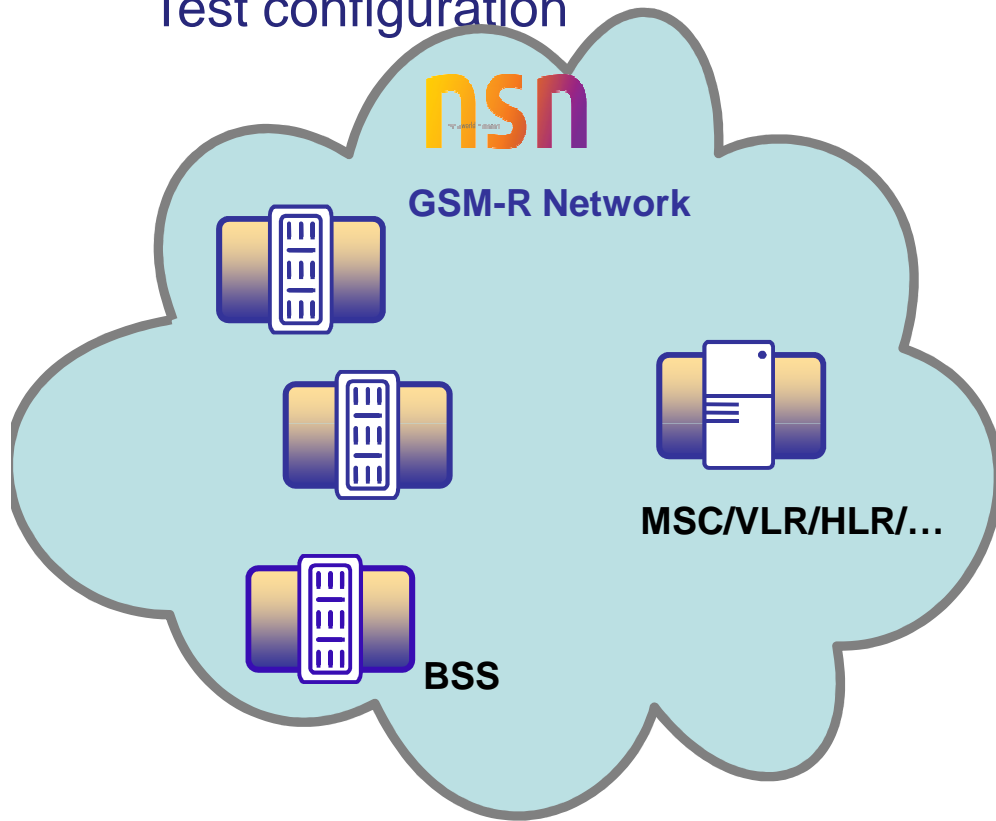
- IOT campaign NSN - KCC based on EIRENE 7/15 during 2011
 - NSN Core (R99) interconnected with KCC Core (R4)
 - NSN Core (R99) interconnected with KCC BSS
 - NSN BSS interconnected with KCC Core (R4)
- Reports were approved by ERA
- Joint NSN and KCC IOT Declaration “To whom it may concern” dated May 2012 about the successful outcome of all three phases has been issued
- Publication of test plans and results on ERA web site



IOT campaign NSN - KCC based on EIRENE 7/15 during 2011



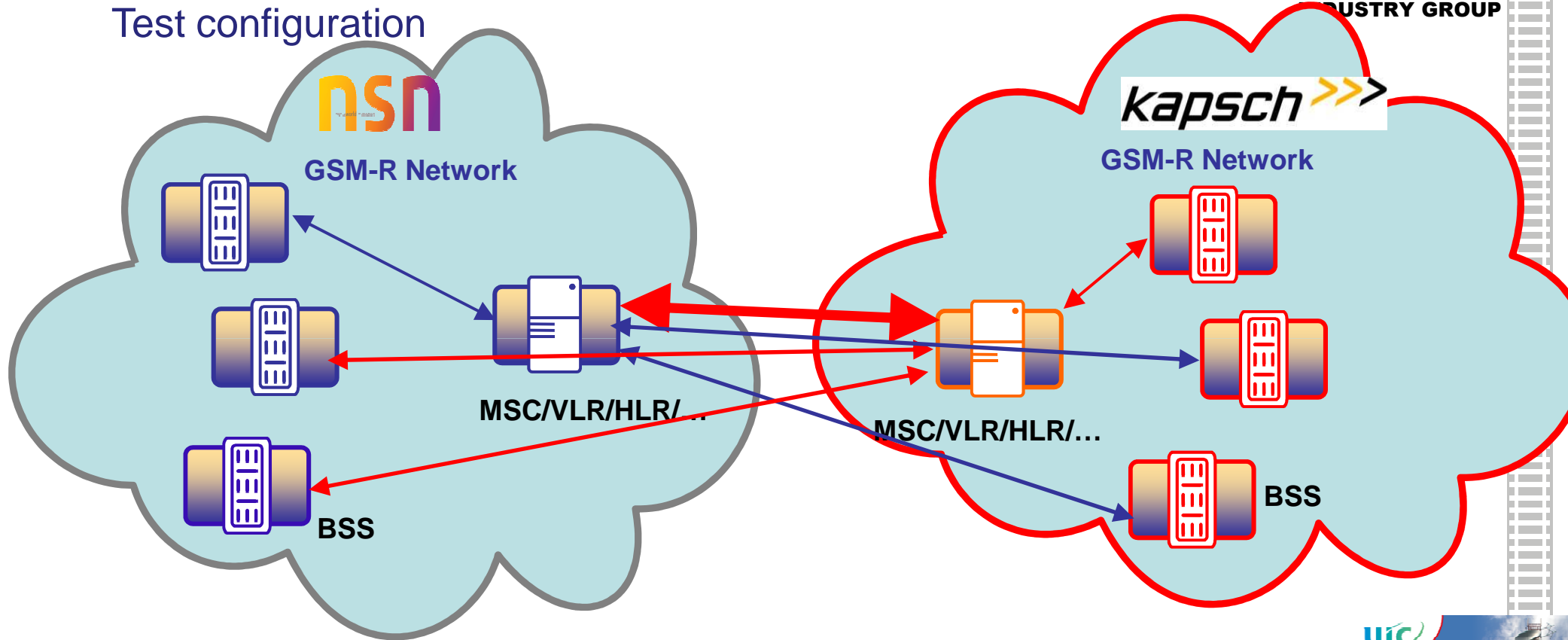
Test configuration



IOT campaign NSN - KCC based on EIRENE 7/15 during 2011



Test configuration



Current EU funding program

TEN MAP 3rd Call until end 2014

- Action N° 2011-EU-60013-S : “Facilitating and speeding up ERTMS deployment”, timeframe 2011-2014
- Validation of ERA test specs for GSM-R network interoperability assessment (WP5)
- Continued GSM-R InterOperability/Compatibility Testing IOT (WP10)
 - CAB /EDOR e2e testing
 - EIRENE 7.4.0/15.4.0
- ETCS over GPRS (WP9)



Validation of ERA test specification for GSM-R network interoperability assesment (WP5)



2013

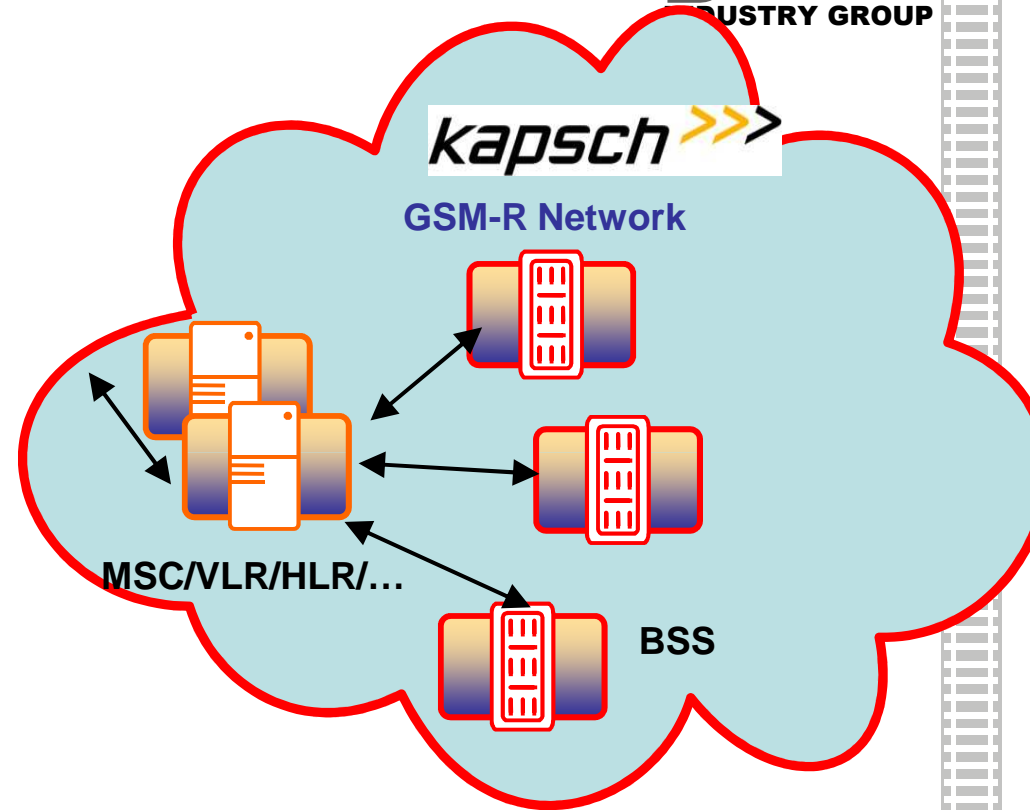
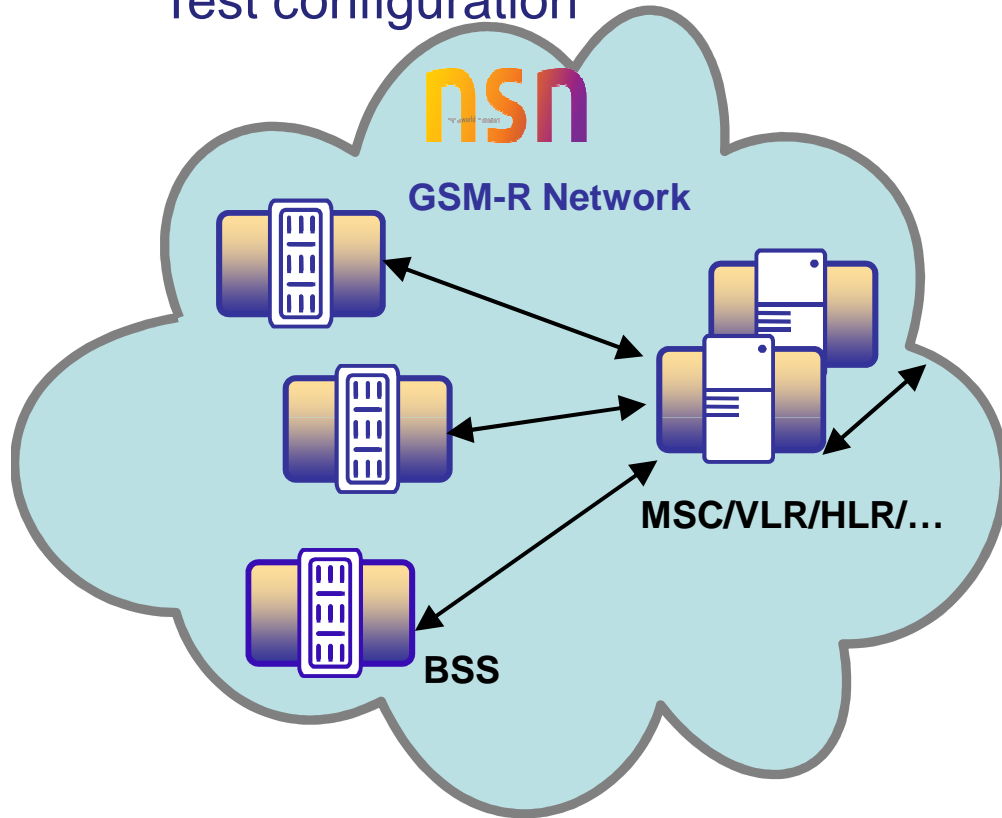
- Test specification for the certification of the GSM-R infrastructure
 - ... to be included in the Application Guide from ERA
- Lab testing of the selected test cases
 - ... performed by KCC and NSN with ERA supervision
 - ... to verify that they are proving the “Mandatory for Interoperability” requirements of the EIRENE specification and that they can be executed
- ...will bring the benefit of a **certified test specification for GSM-R** equipment:
 - a guide for the tests to be performed by the Notified Bodies to prove the GSM-R equipment **interoperability**
 - will guarantee continued and improved GSM-R interoperability c



Validation of ERA test specification for GSM-R network interoperability assesment



Test configuration

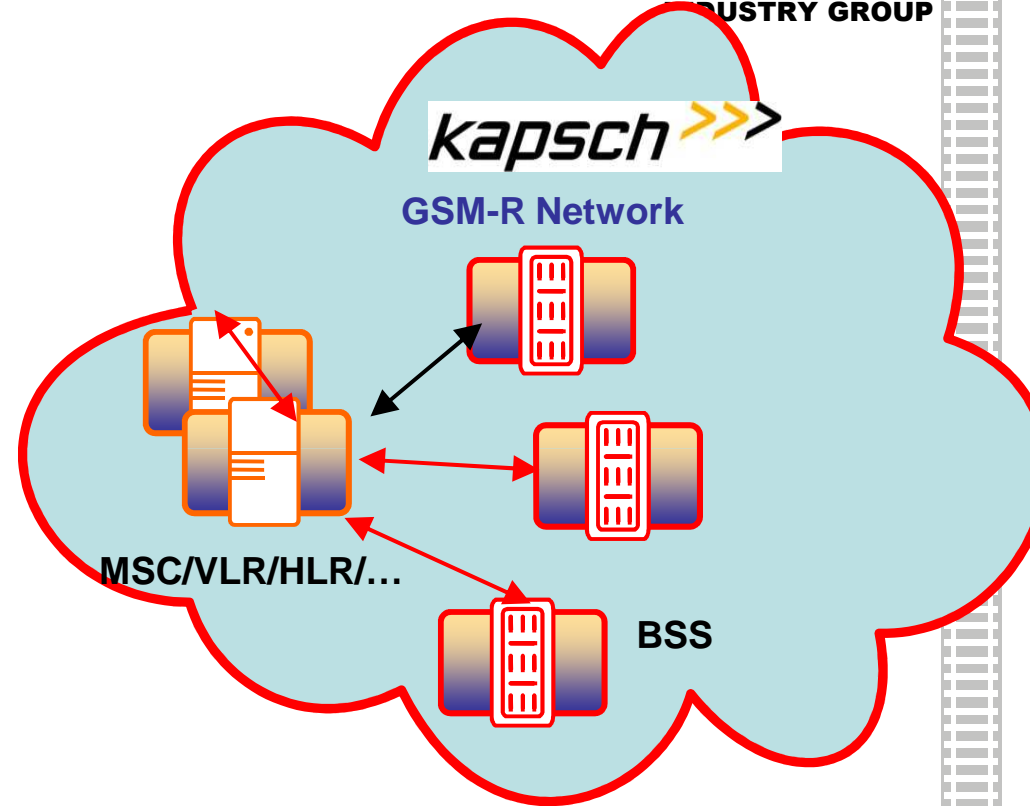
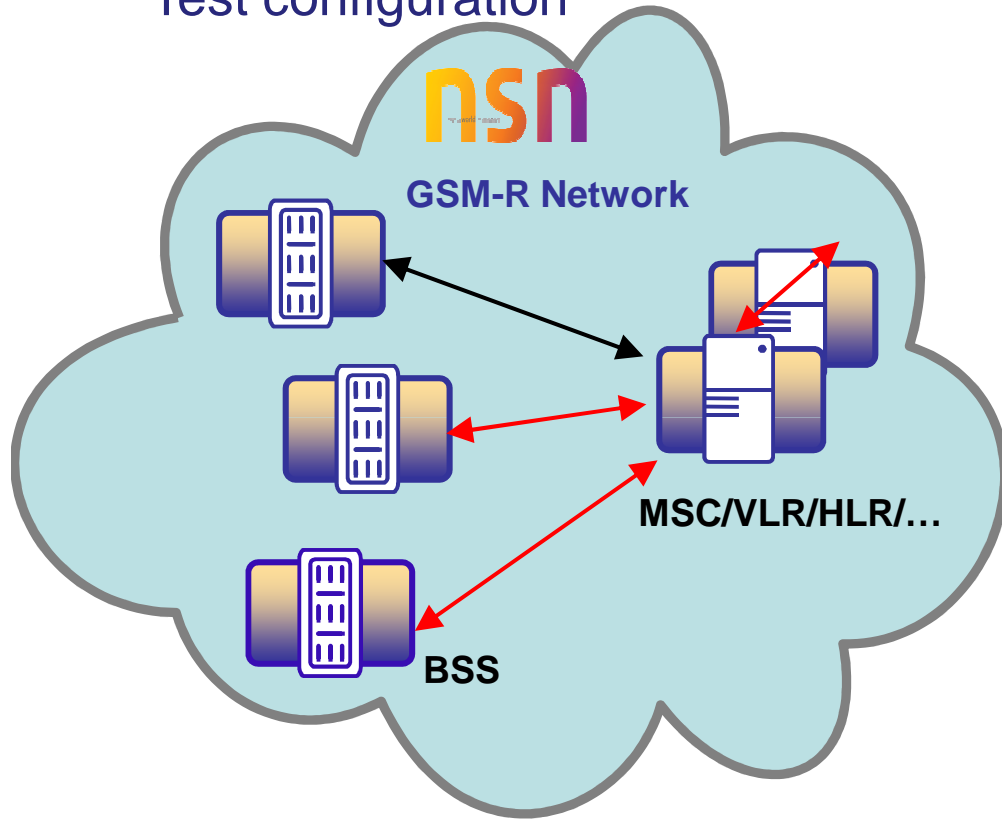


UIC
GSM-R
ASSET
& EVOLUTION
MANAGEMENT
ERIG
10-11 Sept 2013
Paris UIC HQ

Validation of ERA test specification for GSM-R network interoperability assesment



Test configuration



GSM-R interoperability testing for upcoming EIRENE 7.4.0/15.4.0 specification (WP10)



2014

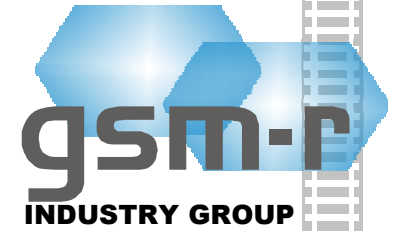
- Test of GSM-R Infrastructure
 - ...to validate the network elements Interoperability
 - ...will prove that the networks supplied by the two vendors NSN and KCC are compatible and support the GSM-R functionality specified as mandatory for interoperability
 - ...test activities will verify all the relevant interfaces: MSC to MSC and BSS to MSC
- Test of GSM-R Cab Radios
 - ...to validate end-to-end functionality and interoperability with track side



ERIG 10-11 Sept 2013 Paris UIC HQ

ALSTOM

FREQUENTIS



funkwerk
traffic & control communication

kapsch >>>

nsn

Selex ES
A Finmeccanica Company

SIEMENS



SIERRA
WIRELESS™

WENZEL
ELECTRONIC SYSTEMS

Thank you

